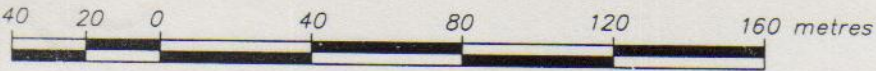


2-322.6(03)

SKETCH PLAN OF LOT 5, D.L. 13, GALIANO ISLAND, COWICHAN DISTRICT, PLAN 43129.

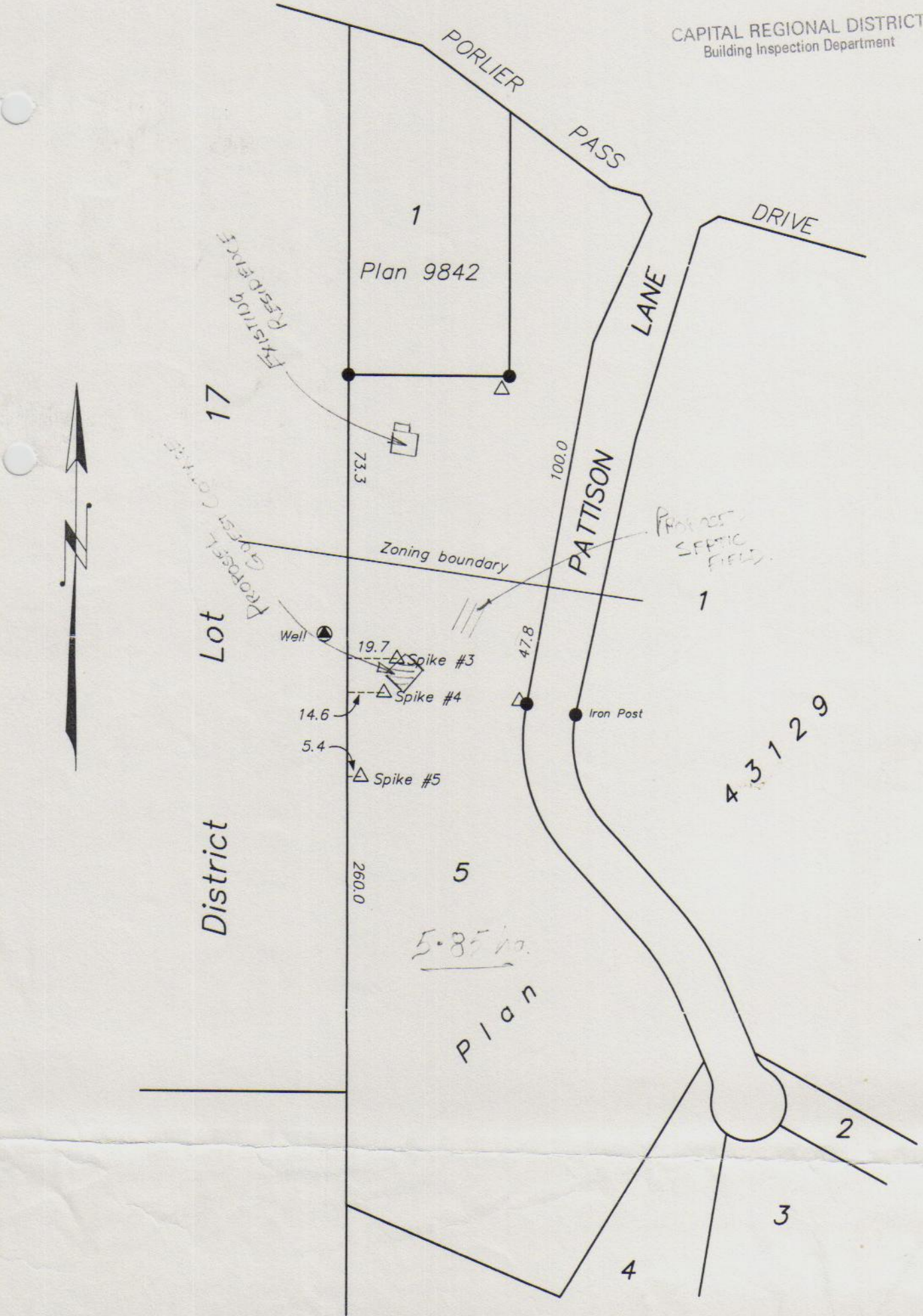
Scale - 1 : 2000



Dimensions are in metres.

RECEIVED
#G403-128
FEB 27 2003

CAPITAL REGIONAL DISTRICT
Building Inspection Department



The zoning boundary is determined by scaling from the Bylaw 127 zoning map.
The dimensions used are from the southwest corner of Lot 5 and the bend in Pattison Lane opposite the southeast corner of Lot 1, Plan 9842
The location of this line should be confirmed by the Islands Trust.

Wolfe-Milner Land Surveying Inc.,
Salt Spring Island, B.C.
C2678